



Wildlife Of The Rainforest

Area 40 hectares (100 acres) of tropical rainforest, surrounded by World Heritage Listed Rainforest.

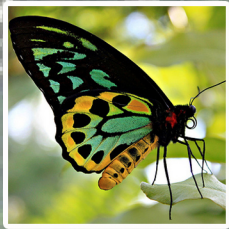
Average rainfall of 2500 mm (100 inches) a year.

The Wet Tropics World Heritage Area of Tropical North Queensland is regarded as the 'jewel in the crown' of Australia's protected natural areas.

The rainforest has great diversity of life, with more species of moths and beetles alone than all the life forms on the Great Barrier Reef.

It has more than 200 species of birds, and more than 60% of Australia's species of butterflies. The rainforest is home of the giant

Amethystine Python, which grow to more than 7.5 metres. Giant Tree Frogs up to 15cms long and large Hercules moths with wingspans of 25cms.. Keep a look out for:



Cairns Birdwing Butterfly
Australia's Largest Butterfly Up to 20cm



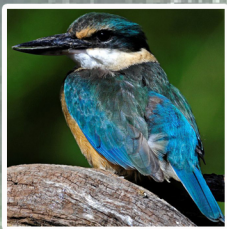
Pademelon
Common wallaby in tropical rainforest. Small with reddish fur



Ulysses Butterfly
Brilliant blue, up to 13cm wingspan



Catbird
A part of the bower bird family. Get their name from their wailing calls which resembles a cats meow



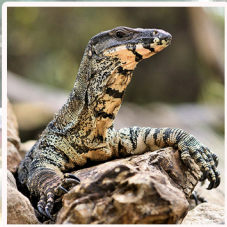
Forest Kingfisher
Blue and white with a black head Builds nests in termite mounds



Kookaburra
Largest Kingfisher in the world



Boys Rainforest Dragon
An aboreal lizard confined to the tropical rainforests of Northern Australia



Lace Monitor
Growing up to 2 metres with yellow and grey markings



Eastern Water Dragon
Semi-aquatic Up to 90cm long



Sulphur Crested Cockatoo
One of Australia's most iconic birds



Brush Turkey
Builds a large communal nest Young chicks have to fend for themselves



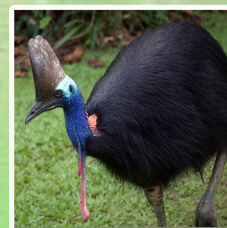
Scrub Python
Largest snake in Australia, growing up to 8 metres in length



Musky Rat Kangaroo
Smallest of the Kangaroo species (macropods)



Rifle Bird
Spectacular Bird Of Paradise



Southern Cassowary
Endangered Species 4th largest flightless bird in the world Only 1200 left in the wild

Interesting Facts About Tropical Rainforests

Tropical rainforest is very ancient and complex, with primitive plants such as Tree ferns dating back more than 150 million years. It is typified by a closed canopy of trees, which cuts out the sunlight, and one or more stratas (layers) of plants below. One hectare (2 acres) has approximately 400 tons of plant life (biomass) above the ground, and 200 tons of roots and other material in its top metre of soil. In one year, up to 14 tons of leaves fall and are broken down by fungus, bacteria and insects. Over the year 1.25 metres (60 inches) of water are transpired through the leaves to replace this - at least 60 inches of rainfall are needed.

Army Duck Facts

Really Spelt DUKW
D = First year of operation
U = Can operate in water
K = Front wheel drive
W = Two rear axles

- * World War II vintage
- * Six wheel drive for all off road and amphibious operations
- * Four wheel drive on highway
- * Ten forward gears and two reverse

- * GMC straight 6 cylinder gasoline engines as diesel was very scarce in WW2
- * Maximum speeds 85 kph on land 8 Knots on water
- * Built by women during WW2
- * Designed to last only 3 years

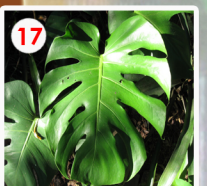
Driver could inflate or deflate tyres while moving, using engine driven compressor.



1. Euodia Elleryana - (Corkwood Tree) Host plant of Ulysses Butterfly.
2. Termites Nest - Unusual type of termite eats core of living trees starting the natural didgeridoo process.
3. Black Wattle/Acacia - Hardwood tree used by Aborigines for spears and clubs, Australia's floral emblem.
4. Tree Ferns - "Giant" species and "Black" species. Ancient plants dated over 150 Million years.
5. Pencil Cedar - Fast growing pioneer species.
6. Pandanus - (Monticola) eaten by Aborigines, and used for weaving.
7. Basket Fern - Often used by animals and insects as shelter.
8. Staghorn Fern - Epiphytes cousin of Elkhorn, very slow growing.
9. Elkhorn Fern - Slow growing, Non parasitic.
10. Birdsnest Fern - May encircle tree trunk.
11. NQ Fan Palm - The largest tree here is approx. 200 years old.
12. Scrub Turkey Nest - Rotting vegetation & mulch incubates eggs of scrub turkey.
13. Stinging Tree - Very painful sting, effect can last up to 6 months, feels similiar to jellyfish sting.
14. Melaleuca - Used by indigenous to make baskets and water containers.
15. Wait-A-While Palm - Stem of rattan cane, can grow up to 300 metres long.
16. King Orchid - Flowers October. Brilliant white flowers.
17. Native Monstera - Edible sweet fruit, tastes like fruit salad.
18. Strangler Fig - Kills host tree and replaces it.
19. Banana - Red Daccah, delicious velvety sweet fruit.
20. Coffee - (Coffea Arabica) Remnant of past coffee plantation almost 100 years ago.
21. Pencil Orchid - Unusual pencil shaped leaves, flowers December.



Smile For The Camera
Your Photos Are Available From The Tropical Treats Kiosk.



FOR YOUR SAFETY
PLEASE REMAIN SEATED
KEEP ARMS AND HEAD INSIDE
VEHICLE.
NO SMOKING PLEASE